

**LEGAL DESCRIPTION  
PUMP HOUSE PARCEL  
CITY OF DANIA BEACH, BROWARD COUNTY, FLORIDA**

A portion of "DANIA GOLF COURSE", according to the plat thereof as recorded in Plat Book 32, Page 17 of the Public Records of Broward County, Florida and being more particularly described as follows:

**COMMENCING** at the Southwest corner of said "DANIA GOLF COURSE";

THENCE North 87°40'48" East on the South line of said "DANIA GOLF COURSE", a distance of 537.62 feet;

THENCE North 16°56'53" West, a distance of 210.61 feet to the **POINT OF BEGINNING**;

THENCE North 82°32'45" West, a distance of 20.00 feet;

THENCE North 07°27'15" East, a distance of 60.00 feet;

THENCE South 82°32'45" East, a distance of 40.00 feet;

THENCE South 07°27'15" West, a distance of 60.00 feet;

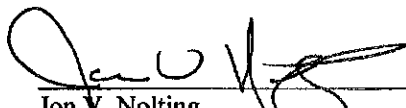
THENCE North 82°32'45" West, a distance of 20.00 feet to the **POINT OF BEGINNING**.

Said lands lying in City of Dania Beach, Broward County, Florida and containing an area of 2,400 square feet (0.0551 acres), more or less.

**SURVEYOR'S NOTES:**

1. Unless this Sketch of Legal Description bears the signature and raised seal of a Florida Licensed Surveyor and Mapper, this map is for informational purposes only and is not valid. Additions and deletions made to the face of this sketch and description will make this Sketch of Legal Description invalid.
2. Lands shown hereon were not abstracted by the surveyor for rights-of-way, easements, ownership or other instruments of record.
3. Bearings shown hereon are relative to the South line of said "DANIA GOLF COURSE", having an assumed bearing of North 87°40'48" East.
4. The description contained herein does not represent a field boundary survey.
5. Unless otherwise noted hereon, record values and field measured values are in substantial agreement.
6. Unless otherwise shown hereon, no encroachments encumber described subject property.
7. Calvin Giordano & Associates Inc. Certificate of Authorization Number is L.B. 6791.

**CALVIN, GIORDANO AND ASSOCIATES, INC.**

  
\_\_\_\_\_  
Jon V. Nolting  
Professional Surveyor and Mapper  
Florida Registration Number LS 4499

Date: 9/9/09

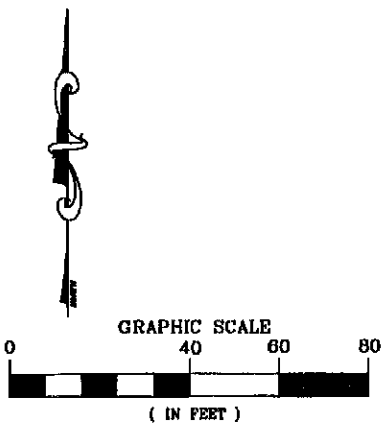
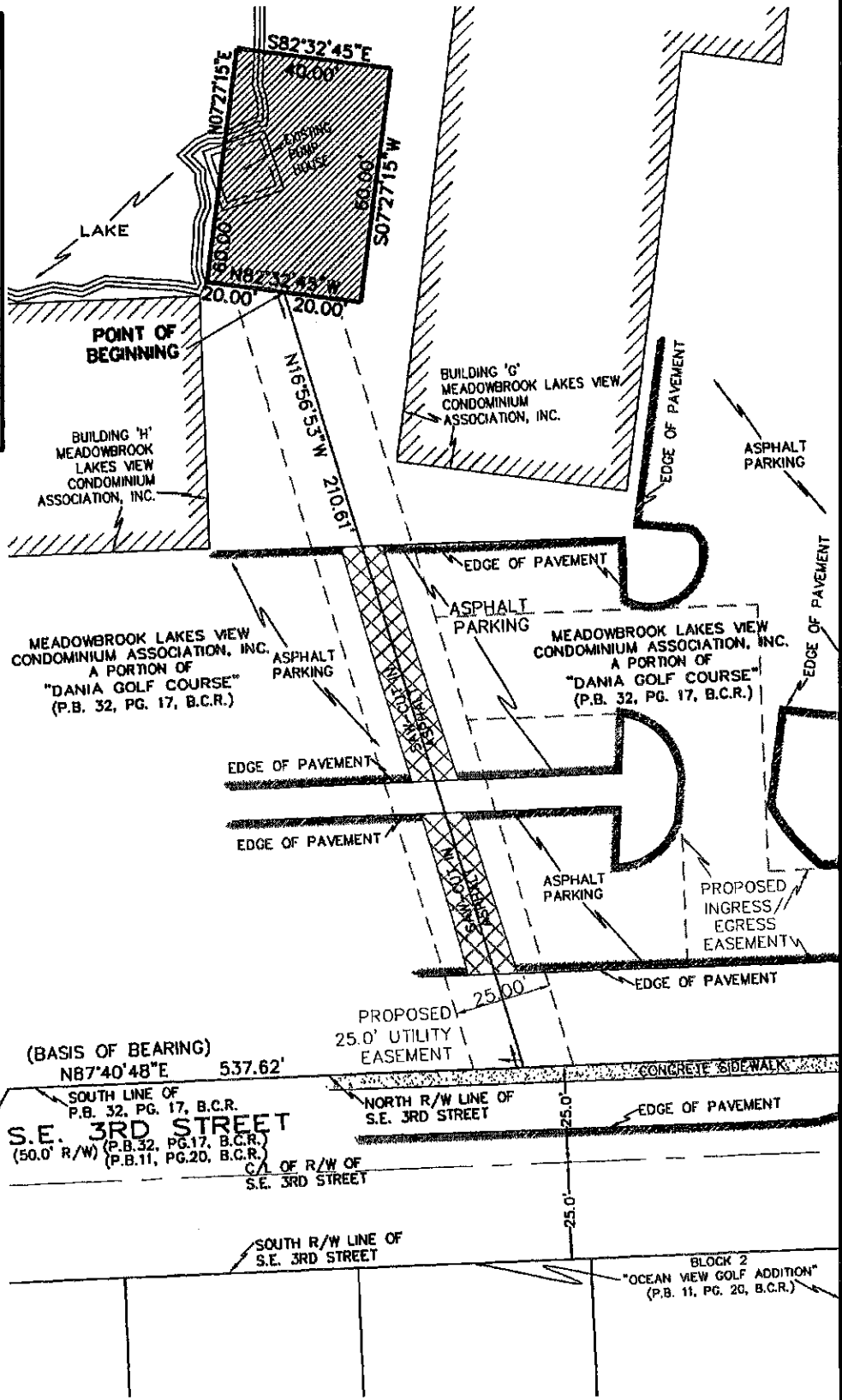
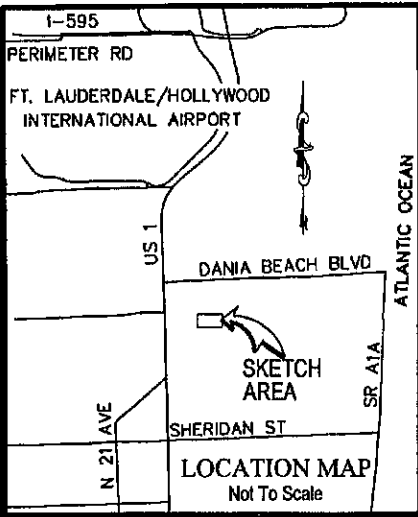
Prepared By:  
CALVIN, GIORDANO AND ASSOCIATES, INC.  
1800 Eller Drive, Suite 600  
Fort Lauderdale, Florida 33316  
August 20, 2009

P:\Projects\2009\092847 Meadowbrook Lakes View Condo\Survey\Legal Descriptions\092847-V-SD-ESMT-PUMP.doc

Sheet 1 of 2

# SKETCH OF LEGAL DESCRIPTION PUMP HOUSE PARCEL

P:\Projects\2009\092847 Meadowbrook Lakes View Condo\Survey\SKETCH\092847-V-SD-PUMPHOUSE.dwg Sep 09, 2009 - 2:25pm



**POINT OF COMMENCEMENT**  
S.W. CORNER OF  
P.B. 32, PG. 17, B.C.R.

- LEGEND:**
- BCR ■ BROWARD COUNTY RECORDS
  - C/L ■ CENTERLINE
  - CA ■ CENTRAL ANGLE
  - D ■ ARC LENGTH
  - ORB ■ OFFICIAL RECORDS BOOK
  - PB ■ PLAT BOOK
  - PG ■ PAGE
  - R ■ RADIUS
  - R/W ■ RIGHT-OF-WAY

**GA** Calvin, Giordano & Associates, Inc.  
**Engineers Surveyors Planners**  
 1800 Eller Drive, Suite 800  
 Fort Lauderdale, Florida 33318  
 Phone: 954.921.7781 Fax 954.921.6807  
 Certificate of Authorization No. LB 6791

**MEADOWBROOK LAKES**  
**CITY OF DANIA BEACH**  
**BROWARD COUNTY, FLORIDA**

SCALE	PROJECT No	SHEET
1"=40.0'	09-2847	2
DATE	CAD FILE	of
09-02-09	SEE LEFT	2

**LEGAL DESCRIPTION  
PUMP HOUSE EASEMENT  
CITY OF DANIA BEACH, BROWARD COUNTY, FLORIDA**

A portion of "DANIA GOLF COURSE", according to the plat thereof as recorded in Plat Book 32, Page 17 of the Public Records of Broward County, Florida and being more particularly described as follows:

**COMMENCING** at the Southwest corner of said "DANIA GOLF COURSE";

THENCE North 87°40'48" East on the South line of said "DANIA GOLF COURSE", a distance of 537.62 feet;

THENCE North 16°56'53" West, a distance of 210.61 feet to the **POINT OF BEGINNING**;

THENCE North 82°32'45" West, a distance of 20.00 feet;

THENCE North 07°27'15" East, a distance of 60.00 feet;

THENCE South 82°32'45" East, a distance of 40.00 feet;

THENCE South 07°27'15" West, a distance of 60.00 feet;

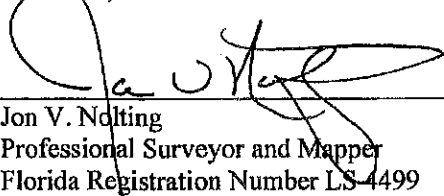
THENCE North 82°32'45" West, a distance of 20.00 feet to the **POINT OF BEGINNING**.

Said lands lying in City of Dania Beach, Broward County, Florida and containing an area of 2,400 square feet (0.0551 acres), more or less.

**SURVEYOR'S NOTES:**

1. Unless this Sketch of Legal Description bears the signature and raised seal of a Florida Licensed Surveyor and Mapper, this map is for informational purposes only and is not valid. Additions and deletions made to the face of this sketch and description will make this Sketch of Legal Description invalid.
2. Lands shown hereon were not abstracted by the surveyor for rights-of-way, easements, ownership or other instruments of record.
3. Bearings shown hereon are relative to the South line of said "DANIA GOLF COURSE", having an assumed bearing of North 87°40'48" East.
4. The description contained herein does not represent a field boundary survey.
5. Unless otherwise noted hereon, record values and field measured values are in substantial agreement.
6. Unless otherwise shown hereon, no encroachments encumber described subject property.
7. Calvin Giordano & Associates Inc. Certificate of Authorization Number is L.B. 6791.

**CALVIN, GIORDANO AND ASSOCIATES, INC.**

  
\_\_\_\_\_  
Jon V. Nolting  
Professional Surveyor and Mapper  
Florida Registration Number LS-4499

Date: 8 SEP 09

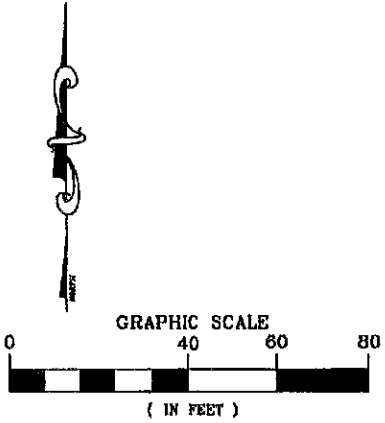
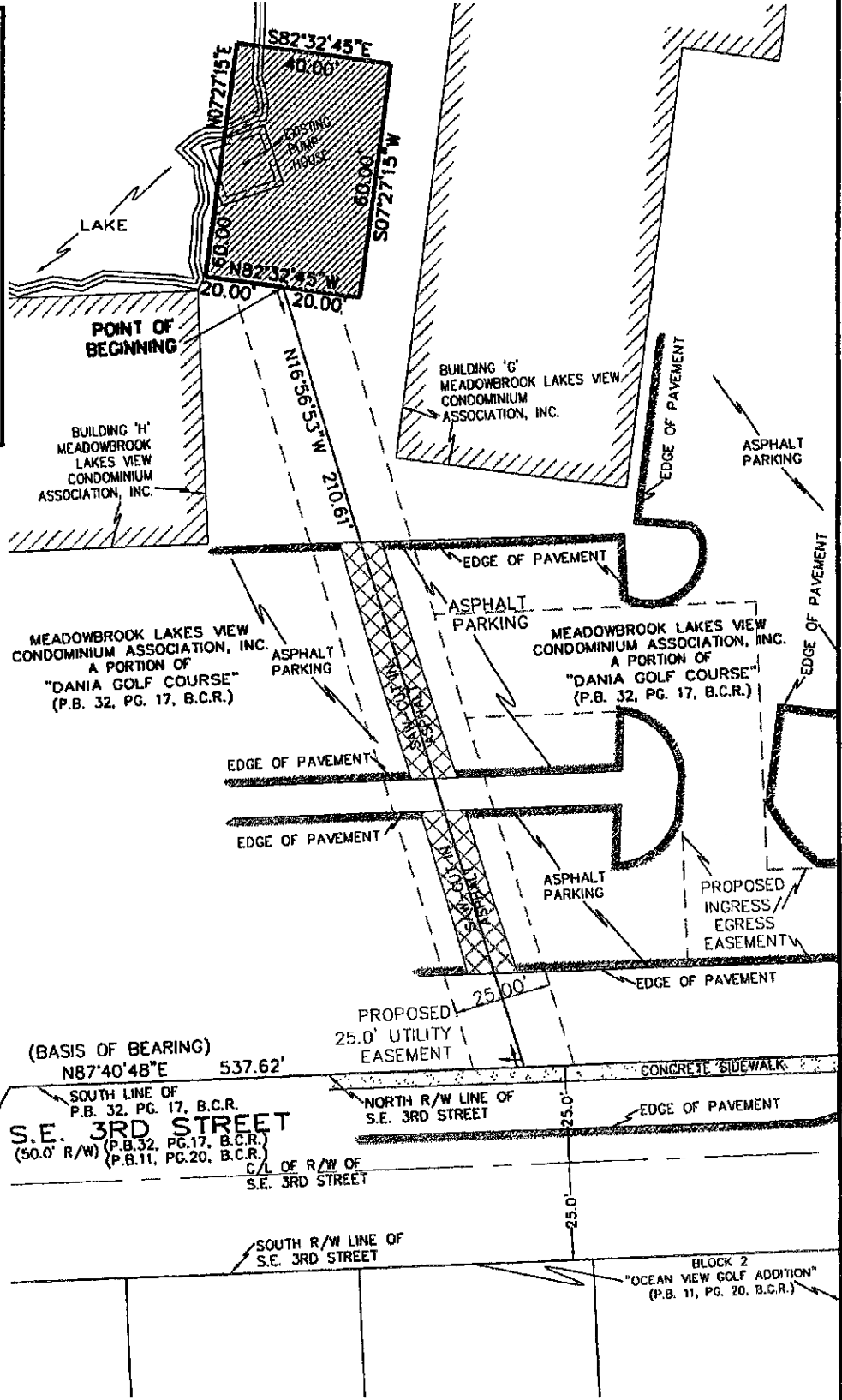
Prepared By:  
CALVIN, GIORDANO AND ASSOCIATES, INC.  
1800 Eller Drive, Suite 600  
Fort Lauderdale, Florida 33316  
August 20, 2009

P:\Projects\2009\092847 Meadowbrook Lakes View Condo\Survey\Legal Descriptions\092847-V-SD-ESMT-PUMP.doc

Sheet 1 of 2

# SKETCH OF LEGAL DESCRIPTION PUMP HOUSE EASEMENT

P:\Projects\2009\092847 Meadowbrook Lakes View Condo Survey\SKETCH\092847-V-SD-PUMPHOUSE.dwg Sep 08, 2009 - 3:00pm



**POINT OF COMMENCEMENT**  
S.W. CORNER OF  
P.B. 32, PG. 17, B.C.R.

(BASIS OF BEARING)  
N87°40'48"E 537.62'  
SOUTH LINE OF  
P.B. 32, PG. 17, B.C.R.  
**S.E. 3RD STREET**  
(50.0' R/W) (P.B. 32, PG. 17, B.C.R.)  
(P.B. 11, PG. 20, B.C.R.)  
C/L OF R/W OF  
S.E. 3RD STREET

**LEGEND:**

- BCR = BROWARD COUNTY RECORDS
- C/L = CENTERLINE
- D = CENTRAL ANGLE
- L = ARC LENGTH
- ORB = OFFICIAL RECORDS BOOK
- PB = PLAT BOOK
- PG = PAGE
- R = RADIUS
- R/W = RIGHT-OF-WAY



**Calvin, Giordano & Associates, Inc.**  
Engineers Surveyors Planners  
1800 Eller Drive, Suite 600  
Fort Lauderdale, Florida 33316  
Phone: 954.921.7781 Fax 954.921.8807  
Certificate of Authorization No. LB 8781

**MEADOWBROOK LAKES  
CITY OF DANIA BEACH  
BROWARD COUNTY, FLORIDA**

SCALE	PROJECT No	SHEET	
1"=40.0'	09-2847	2	
DATE	CAD FILE		
09-02-09	SEE LEFT	2	